

## New Members of the Matrons' Council.

MISS EDITH M. BRADLEY.

Miss Edith M. Bradley, whose portrait we have pleasure in publishing on this page, and who was elected a member of the Matrons' Council at its last meeting, is the Matron of the Salford Union Infirmary, locally known as the Hope Hospital, where she is endeavouring, with the loyal co-operation of the Sisters and nurses on the staff, to maintain an efficient standard of nursing for the benefit of the sick poor in the infirmary. With this object Miss Bradley recently asked for a considerable increase in the staff. She considered the Infirmary needed an increase of twenty-three officers in her department; of this number the Guardians have sanctioned the addition of six trained nurses.

The posts in the nursing world, where the schools are well organised, are naturally sought after, but Matrons who have the spirit of the pioneer, and who are endeavouring under circumstances which call for special organising powers, courage, and fortitude, need support in their difficult task of raising the level of the care of the sick.

Sisters and nurses similarly inspired who join the staff of the Salford Union Infirmary, and help the Matron to place the nursing service on a satisfactory footing will see from the illustration of the fine Nurses' Home which we publish in this issue that they will have to undergo no hard-

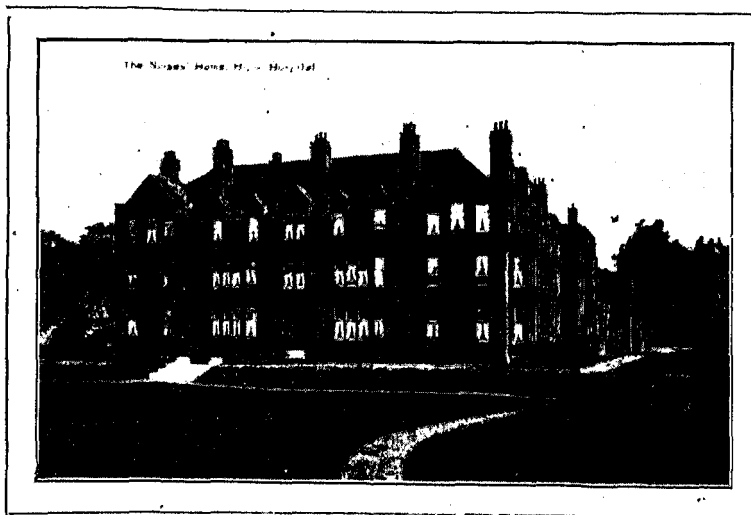
ship in the matter of personal accommodation. Indeed, the fabric of the Infirmary and Nurses' Home seems to have been provided by the Guardians on a liberal scale, the former being built on the pavilion plan, with the pavilions connected by open bridges.

Probably the Guardians are better acquainted with what constitutes efficiency in building, than in nursing. The latter is a highly technical subject requiring years of sympathetic study to grasp in detail, and it is one with which Guardians, as a rule, are not conversant, or brought much in contact, before their election to the honourable office of "Protectors of the Poor." When, therefore, they have an efficient officer in their Matron they are wise to consult her and to accept her estimate of what constitutes efficiency in the nursing department. It is her business to furnish them with expert information in connection with her own department, and they cannot ignore it without detriment to the sick, to the efficiency of the institution, and therefore

Miss Bradley has had wide experience in poor law nursing, having received her training at St. Saviour's Infirmary, East Dulwich. She then had some experience in private nursing, during which time she did temporary duty at the West London Hospital. She has also held the positions of Ward Sister at the Camberwell Infirmary, and Home Sister at Wandsworth Infirmary, and Assistant Matron at Hackney Infirmary.



Miss EDITH M. BRADLEY,  
Matron, Salford Union Infirmary.



Nurses' Home, Salford Union Infirmary.

[previous page](#)

[next page](#)